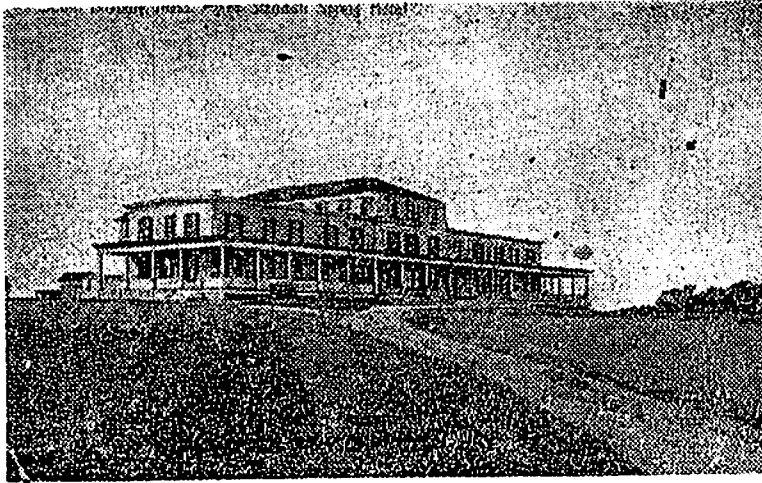


# HOTELS. INNS BOARDING HOUSES & TAVERNS

## IN 1896 DUXBURY



The Myles Standish is situated on a bluff 300 feet from the shore of Duxbury Bay. Its half-mile of beach is noted as a bathing ground, the water being warmed by passing over the flats of Plymouth and Duxbury Bays, and the total absence of an undertow making it particularly safe for women and children.

The management of this hotel has spared neither time, pains or expense to make it one of the finest summer resorts in the East, having furnished for the entertainment and amusement of the guests one of the finest golf links to be found in Massachusetts, besides lawn tennis, croquet and ball grounds, sail and rowboats for ocean and bay fishing, a well equipped livery and boarding

stable at moderate prices, and last, but not least, the worn out bicyclist may find rest and refreshment, with a department set aside for his special benefit, where he can have either his raiment or wheel cleaned or repaired while he is preparing himself for the concert that is given nightly in the large elegantly furnished Music Hall.

The unequalled quality of the air of Duxbury, always inspiring and invigorating, cooled in summer by the waters of Plymouth Bay and yet not made dangerously humid by the stretch of ocean on the side of the prevailing winds; the purity of the water with which the hotel is supplied; the opportunity for rest and yet the variety of amusements which the visitor finds; the book of history ever open, and from which the student may learn lessons concerning the birth and progress of New England life, cannot fail to make this house a favorite resort for those who seek a summer residence near the sea.

The hotel is also furnished with hot and cold water baths, electrical apparatus and many other conveniences.

Guests who are fond of fishing will find this an ideal place to indulge in this sport, as is evidenced by the fact that shell and other fish are served fresh daily, same having been taken from the waters of the Bays by men employed by the hotel for that purpose, who will take pleasure in directing guests to the most advantageous points for the capture of the finny tribe.

Guests coming from the East and Boston can take several trains morning and afternoon at Old Colony Depot, Kneeland Street, for South Duxbury. Those from New York and the West can take Fall River Line, and on arrival at Fall River take cars to Plymouth and there change for South Duxbury arriving at the hotel in time for an eight o'clock breakfast.

A prompt and well managed stage service is maintained between the hotel and railroad station.

This hotel will open early in June and close latter part of September. For information, rates, etc., address

L. BOYER'S SONS, Proprietors  
90 Wall Street, New York or  
CHAS. B. TURNER, Manager  
169 Devonshire Street, Boston